

ECM-Machine – PI Rifling



EMAG PI SYSTEM

The Premium Integrated (PI) model is the perfect entry system for ECM Rifling Process.

- » Feed rates faster than 85 mm/min (caliber related)
- » Barrel length up to 820 mm/32 inch
- » Easy changeover to different calibers
- » Different gain-twist are programmable
- » IoT ready
- » User-friendly HMI

The ECM machining area, control cabinet with control system and electrolyte management system with microfiltration are all mounted on one machine frame. This means that the PI has a small footprint, is compact and can be transported with a forklift truck!

The PI is ideal for the following:

- » Electrochemical Rifling up to 820 mm/ 32 inch length
- » Different material and hardnesses like 410/416 or even stellite
- » Calibers up to \varnothing 12.7 mm/50 cal and more
- » Standard Rifling, Progressive Twist, Polygon, etc.

The PI modules have a base made of MINERALIT®, a polymer concrete eight times more resistant to vibration than gray cast iron. It has a C and a Z axis for a variable rifling process.



EMAG L.L.C. USA

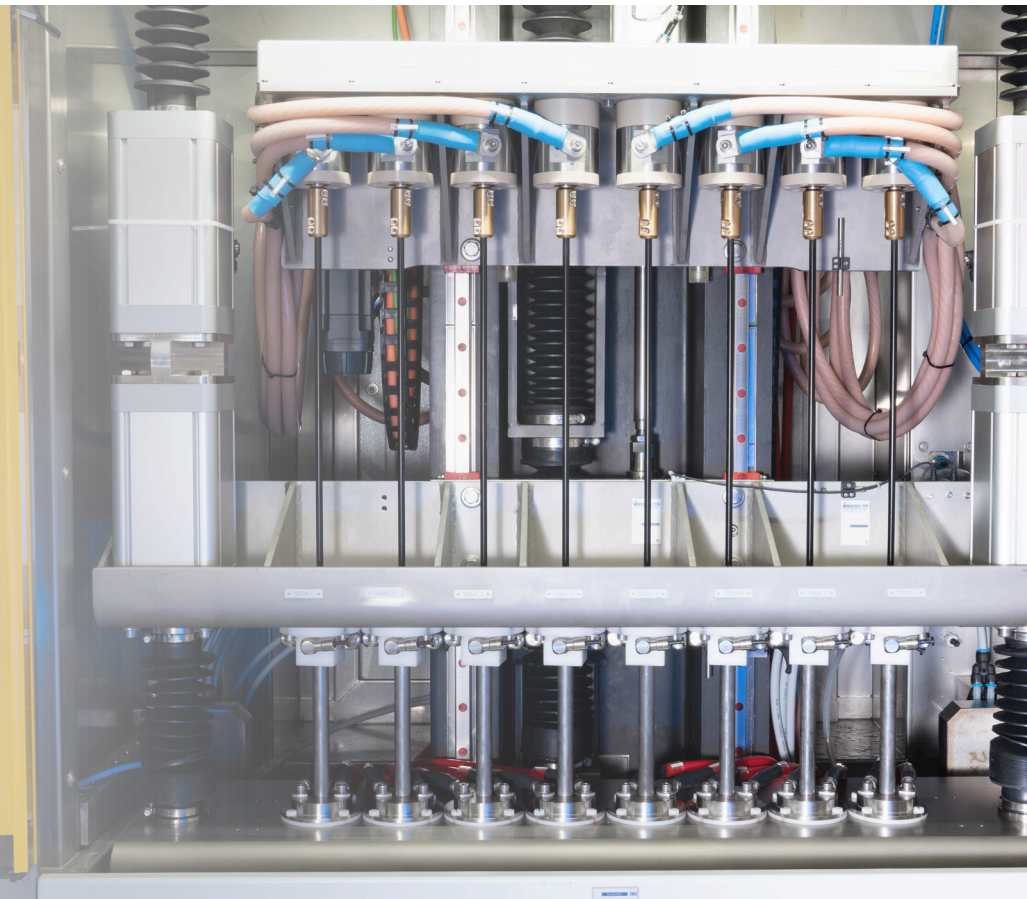
38800 Grand River Avenue | Farmington Hills | MI 48335 | USA

Phone: +1 248 477-7440 | Fax: +1 248 477-7784

E-mail: info@usa.emag.com | Website: www.emag.com

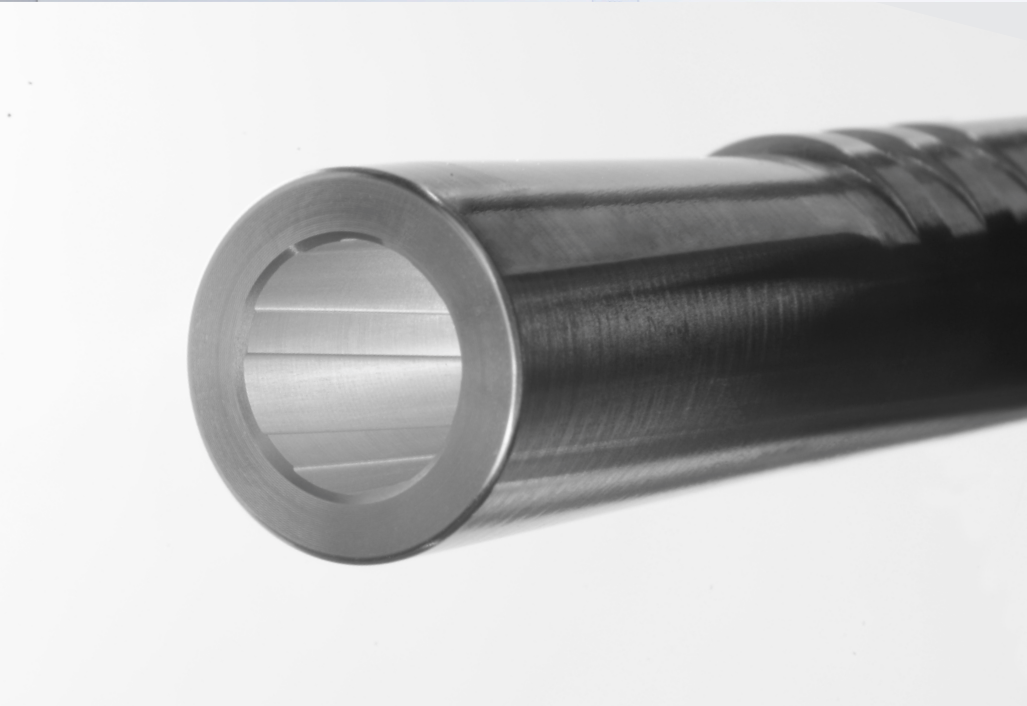
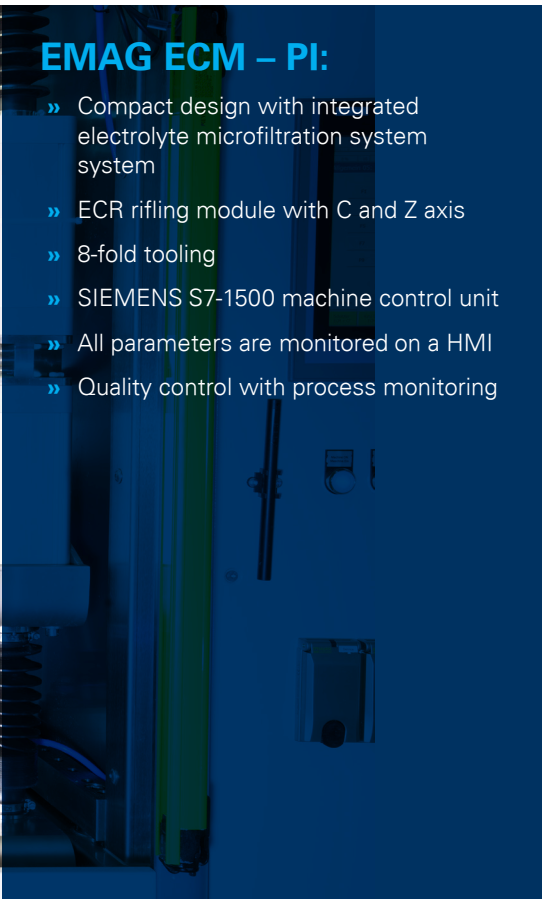


PI – Premium Integrated



EMAG ECM – PI:

- » Compact design with integrated electrolyte microfiltration system
- » ECR rifling module with C and Z axis
- » 8-fold tooling
- » SIEMENS S7-1500 machine control unit
- » All parameters are monitored on a HMI
- » Quality control with process monitoring



TECHNICAL DATA

PI 2500 - 8 fold Fixture

| | | |
|--------------------|-----------|-------|
| Generator capacity | A (DC) | 2,500 |
| Generator capacity | A (pulse) | 8x400 |

Subject to changes. The layout may change to suit technical requirements.
All systems are built to current CE standards.

